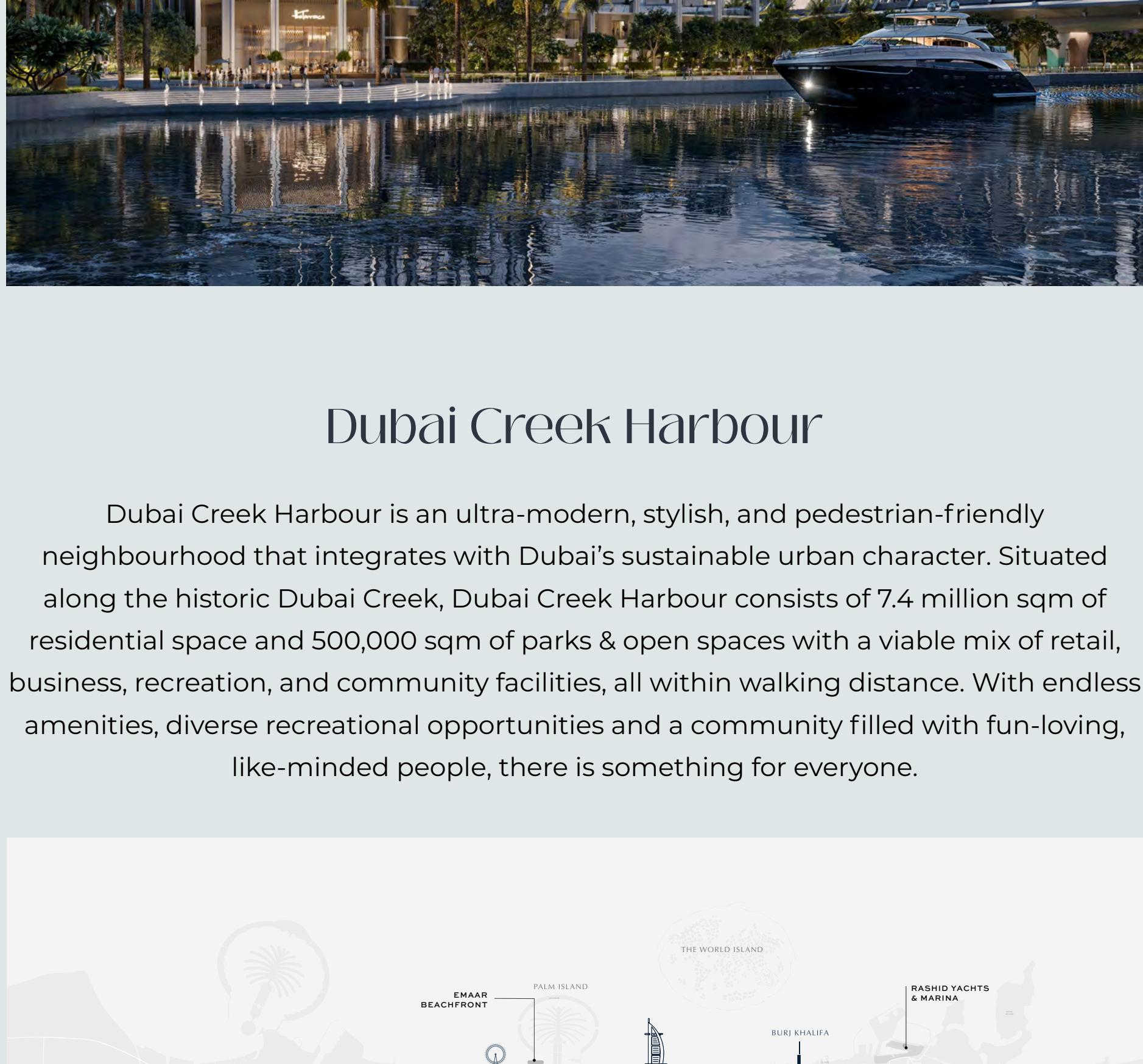


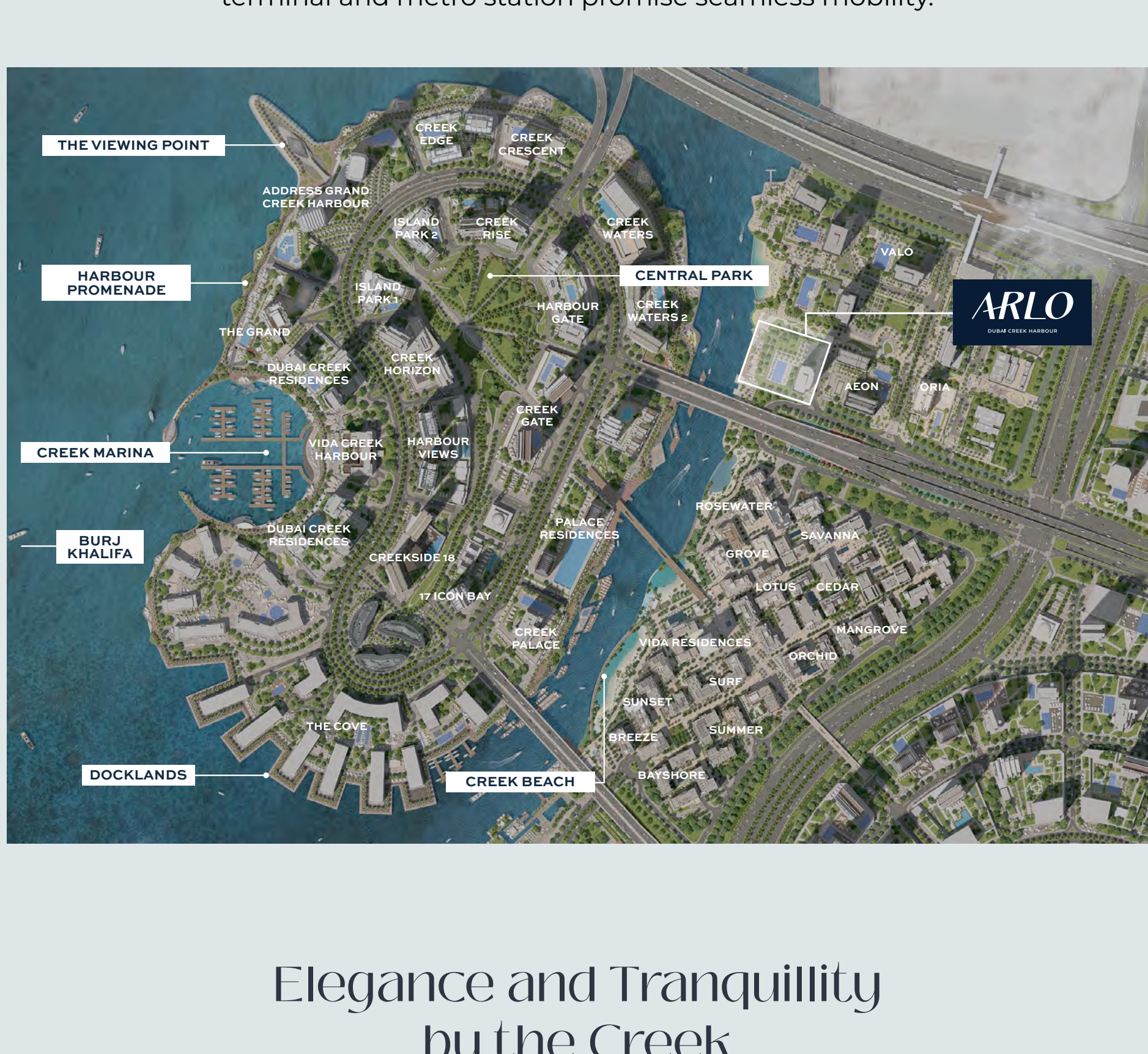
ARLO

DUBAI CREEK HARBOUR



Dubai Creek Harbour

Dubai Creek Harbour is an ultra-modern, stylish, and pedestrian-friendly neighbourhood that integrates with Dubai's sustainable urban character. Situated along the historic Dubai Creek, Dubai Creek Harbour consists of 7.4 million sqm of residential space and 500,000 sqm of parks & open spaces with a viable mix of retail, business, recreation, and community facilities, all within walking distance. With endless amenities, diverse recreational opportunities and a community filled with fun-loving, like-minded people, there is something for everyone.



Why ARLO?

ARLO is nestled in a special district near Creek Beach, ideal for those looking for an active way of life. Explore the scenic waterfront promenade, enjoy play areas and an adventure playground, and go on thrilling adventures at the cycling track and skate park. Sports courts await your competitive spirit, and connections to the RTA ferry terminal and metro station promise seamless mobility.



Elegance and Tranquility by the Creek

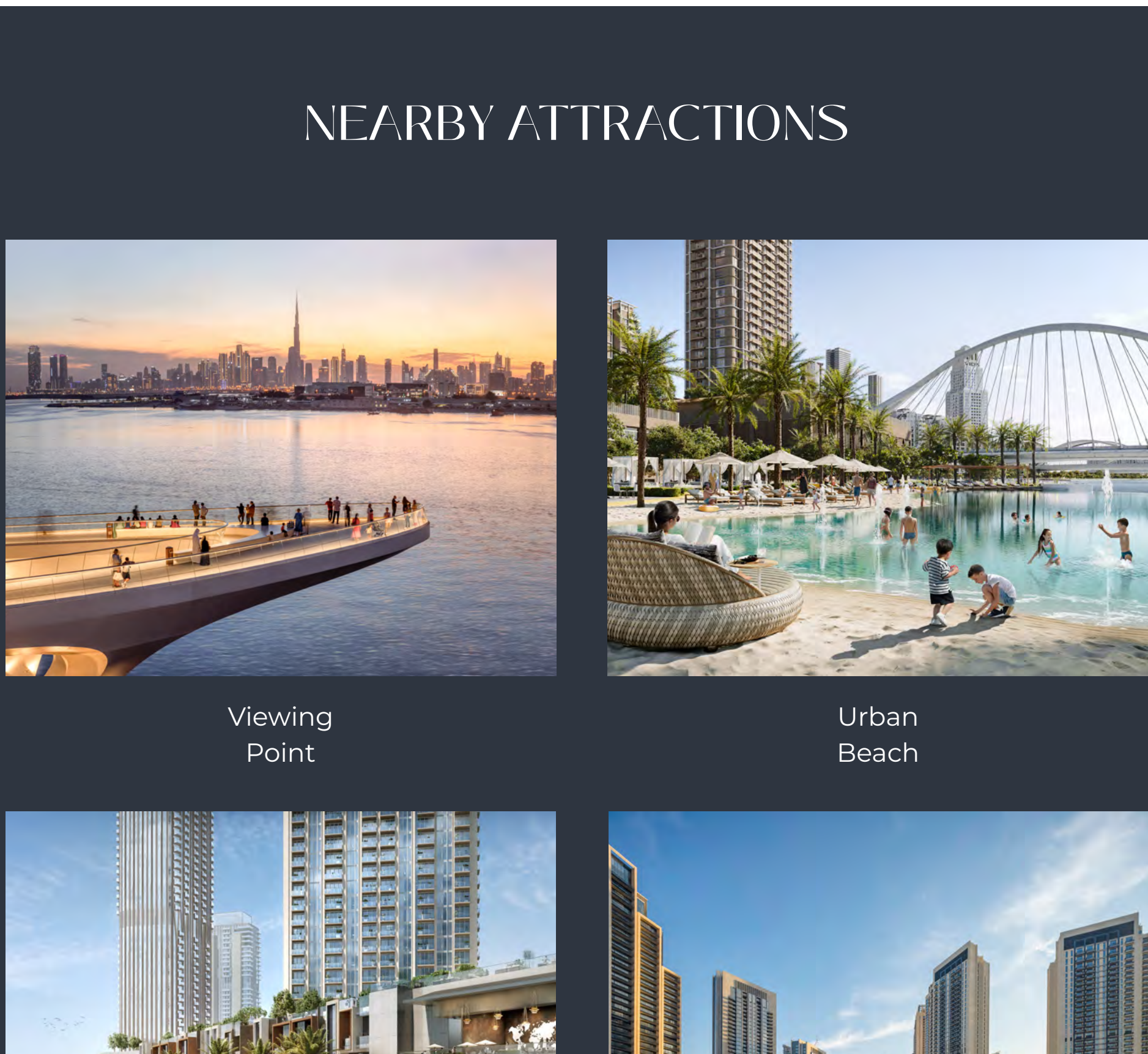
ARLO offers a lifestyle of contemporary elegance and serenity where every day beginning with picturesque views of the Creek and easy access to urban conveniences. ARLO isn't just a place to live—it's a place to love, combining natural beauty with vibrant experiences.



Residential Units

A diverse range of elegantly appointed 1, 2, and 3-bedroom apartments with spacious balconies, and 3-bedroom townhouses featuring expansive rooftop terraces overlooking the canal.

Apartments	Area Sq. ft.		Starting Price (in AED Mn)
No. of Bedrooms	Min. Area (sq. ft.)	Max. Area (sq. ft.)	From
1-Bedroom	705	829	1.7 M
2-Bedroom	1,209	1,261	2.7 M
3-Bedroom	1,745	1,745	4.7 M
3-Bedroom Townhouse	3,263	3,276	5.6 M



Payment Plan

Payment Plan	Payment Percentage	Date
Down Payment	10%	May 2024
1st Instalment	10%	Jul 2024
2nd Instalment	10%	Jan 2025
3rd Instalment	10%	Jun 2025
4th Instalment 20% Construction Completion	10%	Apr 2026
5th Instalment 40% Construction Completion	10%	Nov 2026
6th Instalment 60% Construction Completion	10%	Jun 2027
7th Instalment 80% Construction Completion	10%	Dec 2027
8th Instalment 90% Construction Completion	10%	Apr 2028
9th Instalment 100% Construction Completion	10%	Oct 2028

NEARBY ATTRACTIONS



Viewing Point



Urban Beach



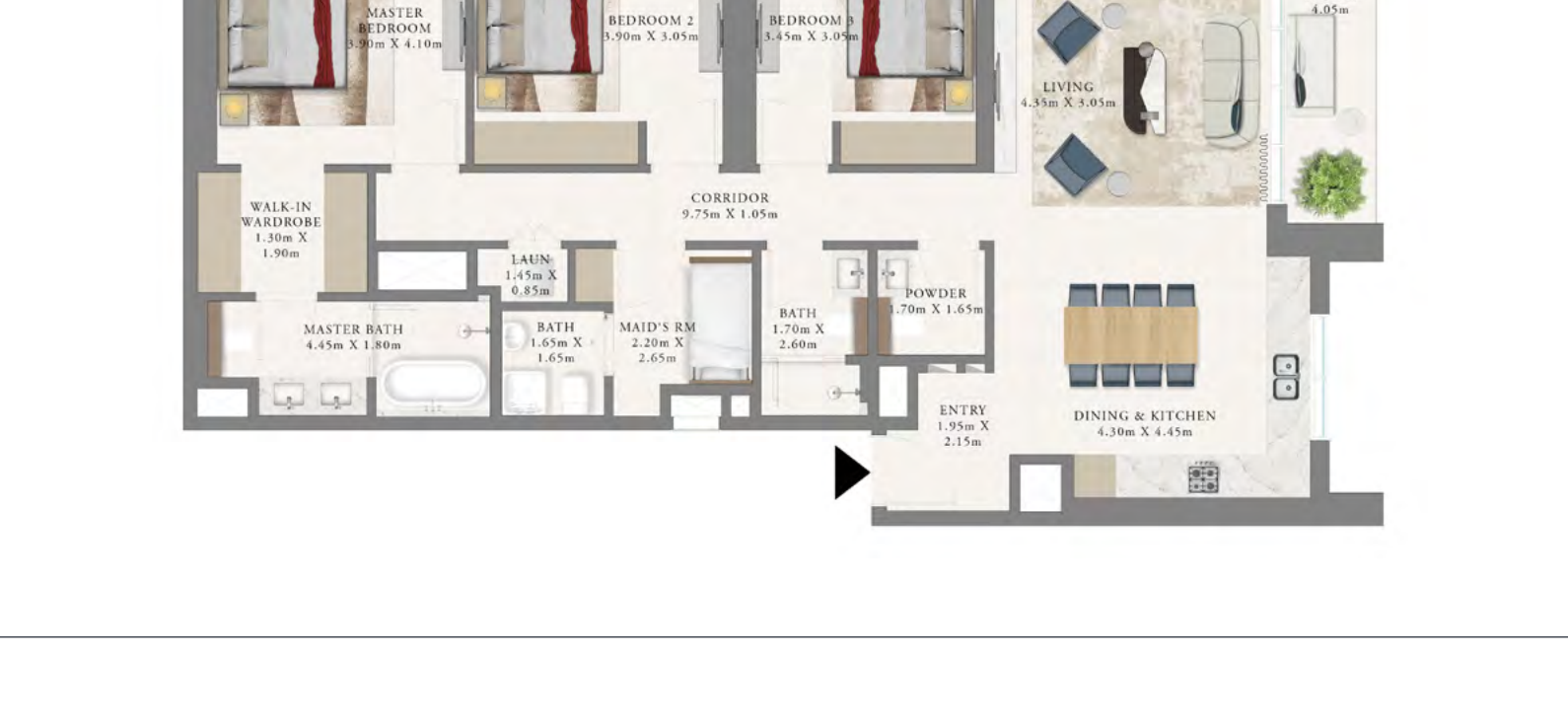
Harbour Promenade



Central Park

Unit Types

TYPICAL 1 BEDROOM



TYPICAL 2 BEDROOM



TYPICAL 3 BEDROOM



TOWNHOUSE

EMAAR